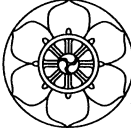
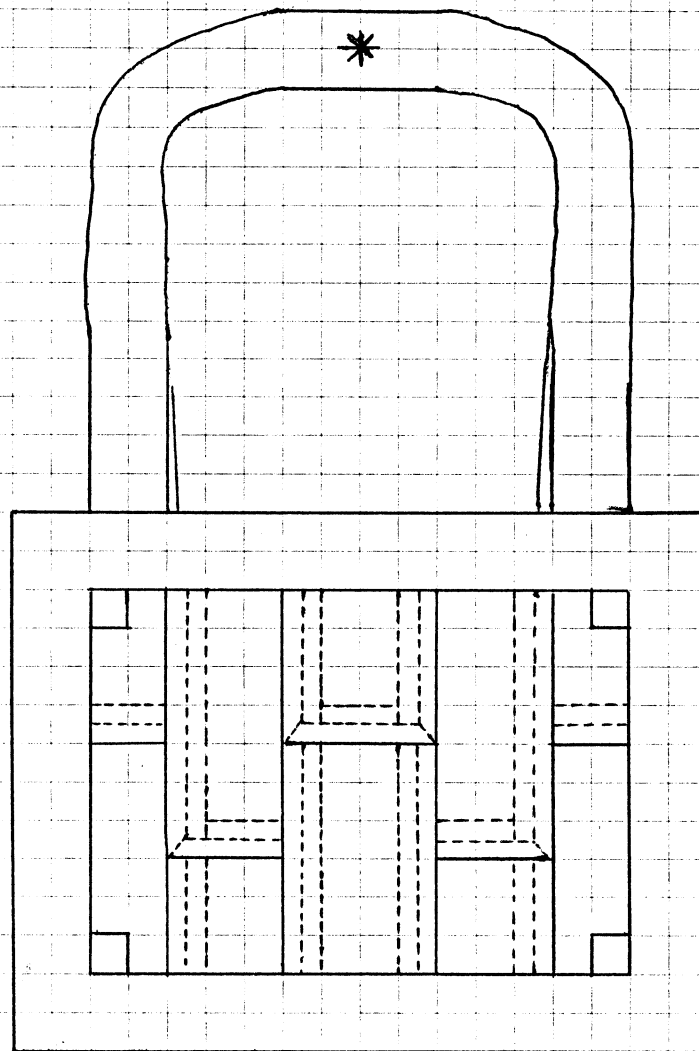


The Kwan Um  School of Zen

Korean Buddhist Chogye Order
Zen Master Seung Sahn, Founding Teacher

Sewing Instructions for
Small Kasa

Developed by
Merrie Fraser JDPSN



SMALL KASA
(5 PRECEPTS)

I. TERMS, FORMS & LAY-OUT.

A. DEFINITION OF TERMS FOR FORMULAS.

A = FINISHED WIDTH INCLUDING FRAME

B = FINISHED LENGTH INCLUDING FRAME

C = BAND WIDTH AS IT APPEARS ON THE FRONT (1")

F = FRAME WIDTH (1" - 1½")

Q = SQUARE SIZE (VISIBLE PART) (1" - 1¼")

S = SEAM ALLOWANCE (= ½")

T = STRAP WIDTH

THEREFORE

X = TOTAL CUT WIDTH = $A + 8C + 2S$

Y = TOTAL CUT LENGTH = $B + 2C + 2S$

P = VISIBLE PANEL WIDTH FROM CENTER OF BAND TO CENTER OF BAND INSIDE FRAME!

$$\frac{A - 2F}{5}$$

H = LENGTH COMMON DENOMINATOR INSIDE FRAME!

$$\frac{B - 2F}{3}$$

Q = C FOR SMALL KASAS.
= F FOR LARGE (CEREMONY) KASAS

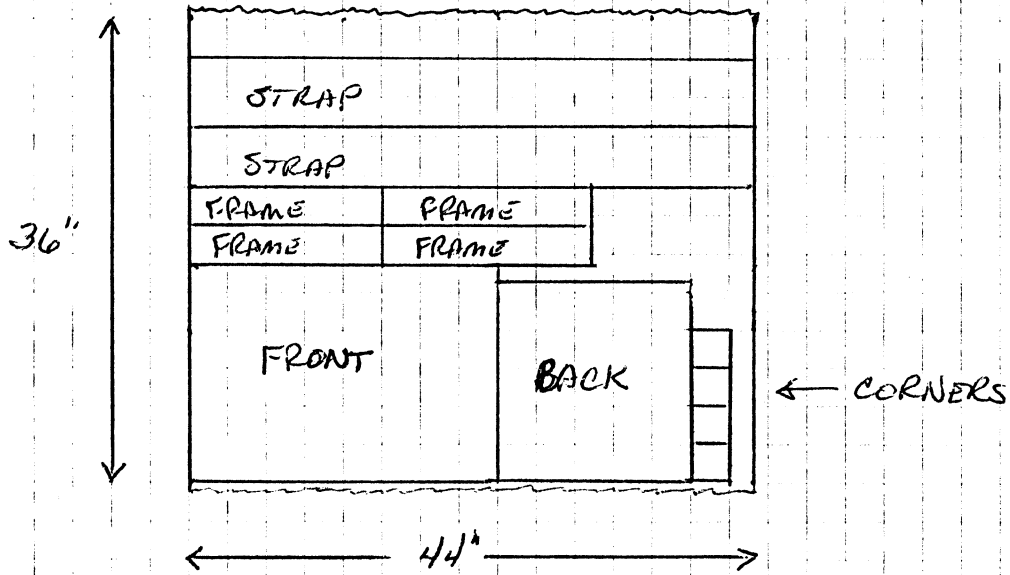
CUT $Q + 2S$ OR 3" x 3" WHICHEVER IS LARGER.

NOTE! STRAP LENGTH MUST BE ADJUSTED TO THE PERSON. THE TOP OF THE KASA SHOULD HIT ABOUT MID-CHEST + BE LONG ENOUGH TO FALL AT LEAST 6" BELOW THEIR WAISTLINE.

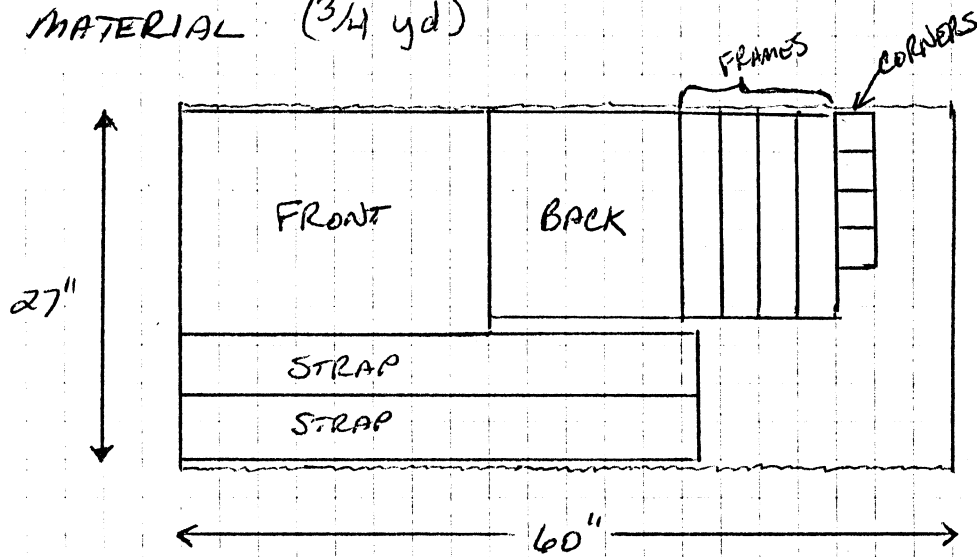
B. LAY-OUT OF PIECES

44" MATERIAL (1 yd)

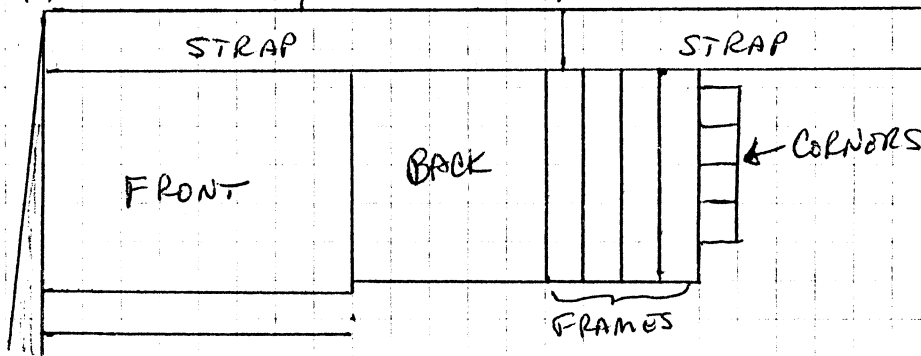
FINISHED KASA = 15 x 14



60" MATERIAL (3/4 yd)



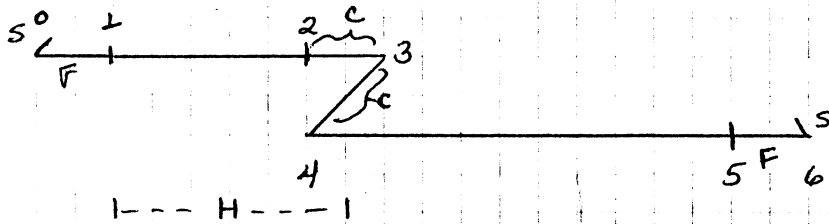
44" FOLDED - ONLY COUNT WHAT YOU SEE - THIS IS FOR CUTTING 6-10 AT ONCE.



SMALL KASA MEASUREMENTS

C. MARKING FORMULAS.

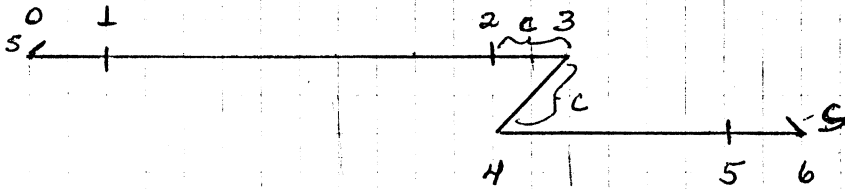
VERTICAL MARKS FOR HORIZONTAL LINES.
(DOWN THE SIDES OF THE KASA FRONT)



3 PANELS
ODD-NUMBERED

MARKS

0	0 =	0
1	1 =	S + F
2	2 =	S + F + H - 1/2 C
3	3 =	S + F + H + 1/2 C
4	4 =	S + F + H + 1 1/2 C
8	5 =	S + F + 3H + 2C
9	6 =	2S + 2F + 3H + 2C

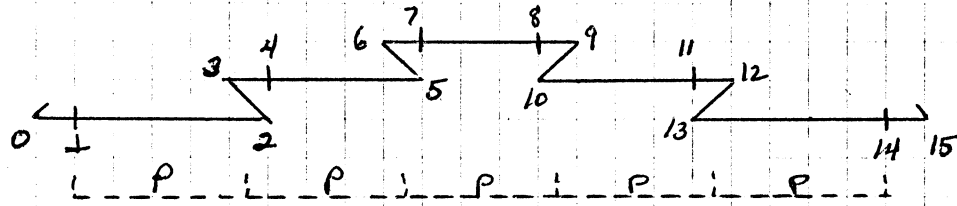


2 PANELS
EVEN-NUMBERED

MARKS

0	0 =	0
1	1 =	S + F
5	2 =	S + F + 2H - 1/2 C
6	3 =	S + F + 2H + 1/2 C
7	4 =	S + F + 2H + 1 1/2 C
8	5 =	S + F + 3H + 2C
9	6 =	2S + 2F + 3H + 2C

C. MARKING (CON'T.)



0	=	0				
1	=	S	+	F		
2	=	S	+	F	+	P
3	=	S	+	F	+	P
4	=	S	+	F	+	P
5	=	S	+	F	+	2P
6	=	S	+	F	+	2P
7	=	S	+	F	+	2P
8	=	S	+	F	+	3P
9	=	S	+	F	+	3P
10	=	S	+	F	+	3P
11	=	S	+	F	+	4P
12	=	S	+	F	+	4P
13	=	S	+	F	+	4P
14	=	S	+	F	+	5P
15	=	2S	+	2F	+	5P

THESE MARKS ARE MADE ACROSS THE TOP + BOTTOM OF THE MATERIAL TO FORM VERTICAL LINES.

SMALL KASA MEASUREMENTS

D. MARKING TABLES

PARAMETERS	INCHES		CENTIMETERS	
	REGULAR	LARGE	REGULAR	LARGE
A WIDTH	16	18	40	46
B LENGTH	14	16	35	40
C BAND	1.25	1.5	3	4
F FRAME	1.50	2	4	5
J SEAM	.50	.50	1.5	1.5
Q SQUARE	1	1	2.5	2.5
T STRAP	2	2.25	5.0	5.7
THEREFORE				
X CUT WIDTH	27	31	67	81
Y CUT LENGTH	17.5	20	44	51
P WIDTH PANEL	2.6	2.8	6.4	7.2
H LENGTH PANEL	3.66	4.0	9.0	10.0
CUT SIZES:				
FRONT (1)	27 x 17.5	31 x 20	67 x 44	81 x 51
BACK (1)	17 x 15	19 x 17	41 x 36	47 x 41
FRAME (4)	17 x 2.5	19 x 3	41 x 7	47 x 8
CORNER (4)	3 x 3	3 x 3	7.5 x 7.5	7.5 x 7.5
STRAP (2)	5 x 36	5.5 x 38	13 x 91.5	14.5 x 96.5

VERTICAL MARKS FOR HORIZONTAL LINES

0	0	0	0	0
1	2	2.5	5.5	6.5
2	5	5.75	13	14.5
3	6.25	7.25	16	18.5
4	7.50	8.75	19	22.5
5	8.75	9.75	22	24.5
6	10.00	11.25	25	28.5
7	11.25	12.75	28	32.5
8	15.50	17.5	38.5	44.5
9	17.50	20	44	51

5-3 = DISTANCE BETWEEN 2 CUTS

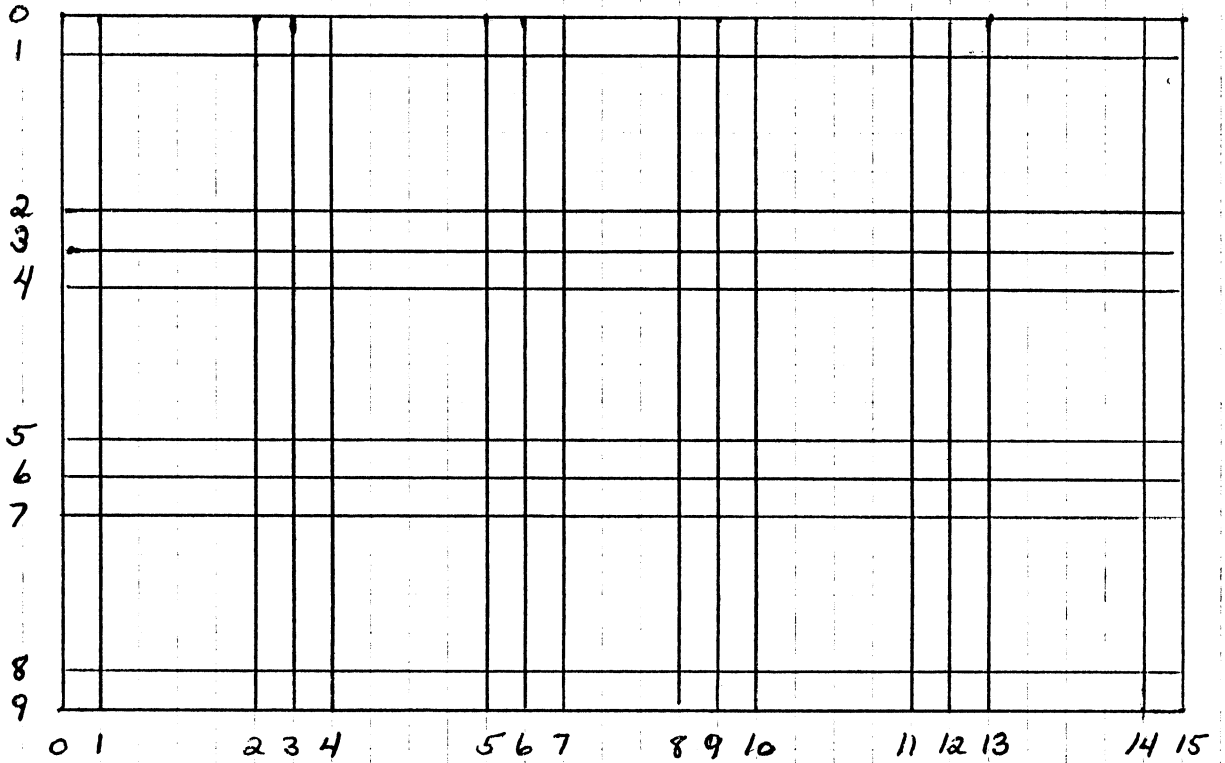
(SAME)

HORIZONTAL MARKS FOR VERTICAL LINES

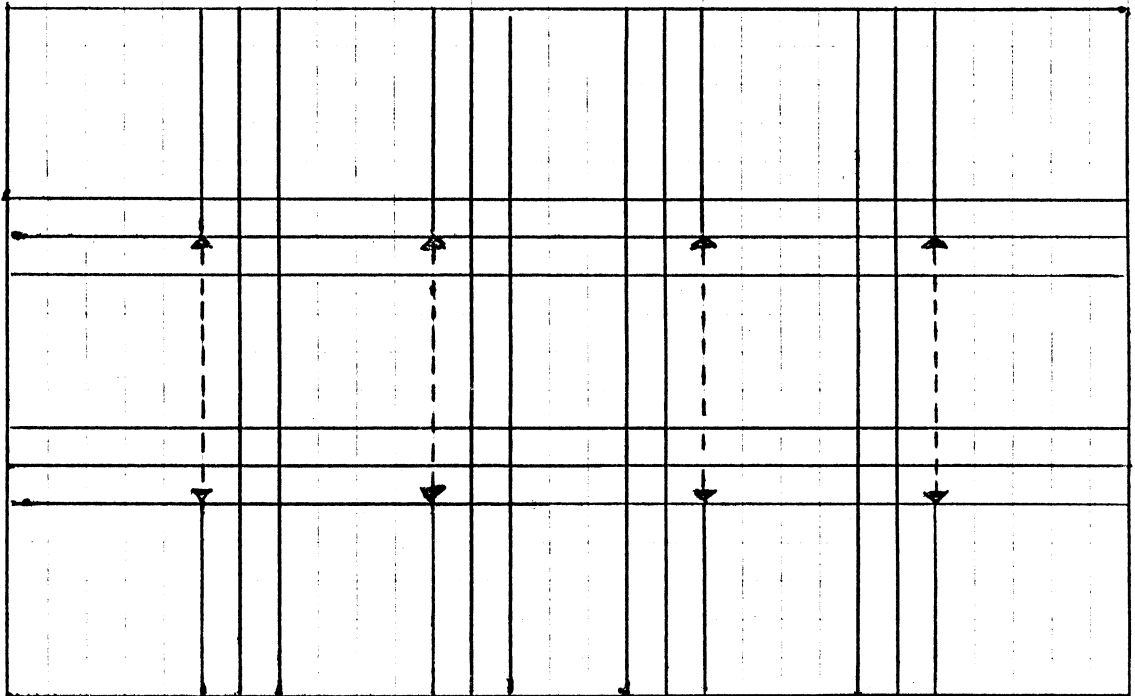
0	0	0	0	0
1	2	2.50	5.50	6.5
2	5.25	6.00	13.50	15.75
3	6.50	7.50	16.50	19.75
4	7.75	9.00	19.50	23.75
5	10.25	11.75	25.75	31
6	11.50	13.25	28.75	35
7	12.75	14.75	31.75	39
8	14.25	16.25	35.25	42
9	15.50	17.75	38.25	46
10	16.75	19.25	41.25	50
11	19.25	22.00	47.50	57.25
12	20.50	23.50	50.50	61.25
13	21.75	25.00	53.50	65.25
14	25	28.50	61.50	74.5
15	27	31	67	81

M →

1. USE THE MARKING TABLE TO MARK THE KASA FRONT:

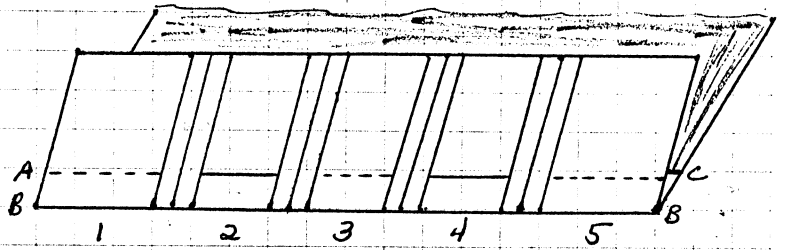


2. CUT 4 INTERNAL SLITS ON THE OUTSIDE LINE OF THE 4 VERTICAL SETS OF 3. (DOTTED LINE BETWEEN ARROWS)

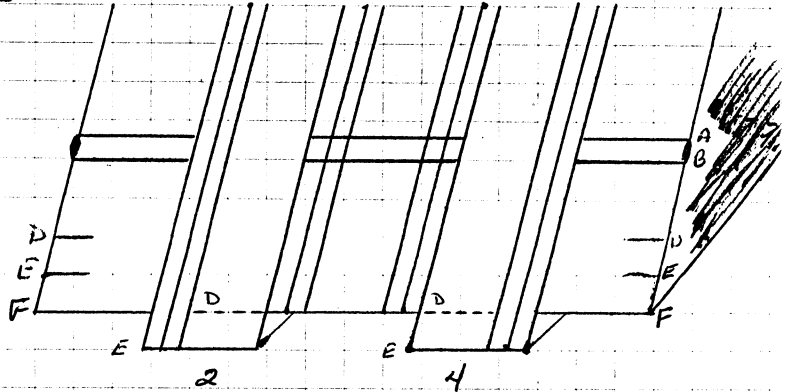


3. HORIZONTAL STITCHING - DO NOT STITCH ACROSS VERTICAL LINES

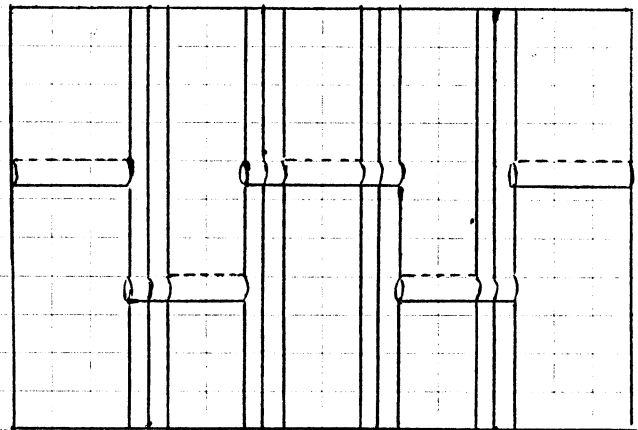
TOP LINE - FOLD + IRON
ON LINE B. STITCH
THE 2 ENDS + MIDDLE
PARTS (DOTTED LINE).
UNFOLD + IRON,
PARTS 2 + 4 WILL
DROP LOWER THAN THE
REST (NO PLEAT) DO
NOT TRY TO IRON A CREASE
FOR THEM.



BOTTOM LINE - FOLD + IRON
ON LINE F, THE 2 MIDDLE
PANELS WILL DROP DOWN
SO LINE D WILL BE
EVEN WITH LINE F.
STITCH ON LINE D SO THAT
IT IS EVEN WITH LINE F.
MARKINGS. AGAIN, DO
NOT CROSS THE VERTICAL
LINES.



WHEN YOU HAVE COMPLETED
THE HORIZONTAL
STITCHING, THE KASA
FRONT SHOULD LOOK
LIKE THIS:



IRON KASA FLAT BEFORE
STARTING WITH THE
NEXT STEP.

4. VERTICAL STITCHING

FOLD KASA ON LINE 2 & 11
IRON & PIN. PIN THE
FLAP ESPECIALLY SO
THAT IT WILL STAY IN
PLACE WHEN YOU START
TO STITCH

STARTING FROM THE BOTTOM
STITCH UP LINES 3 & 10
TO HALFWAY UNDER THE FLAP.
CUT YOUR THREAD.

STARTING AT THE MIDDLE
OF THE FLAP, TOP STITCH
& CONTINUE UP LINES 3 & 10
TO THE TOP.

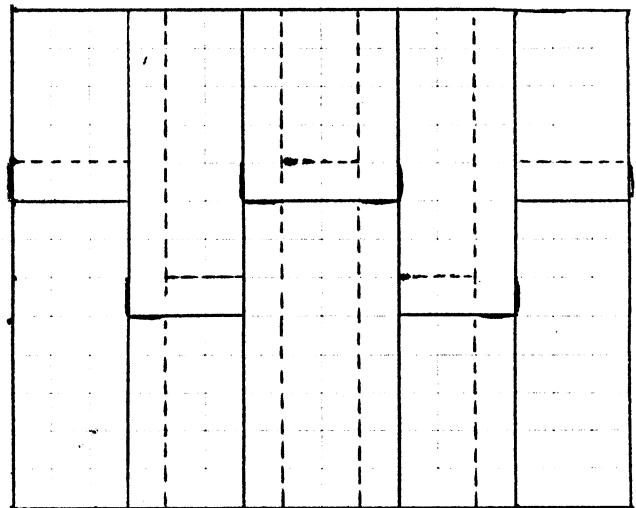
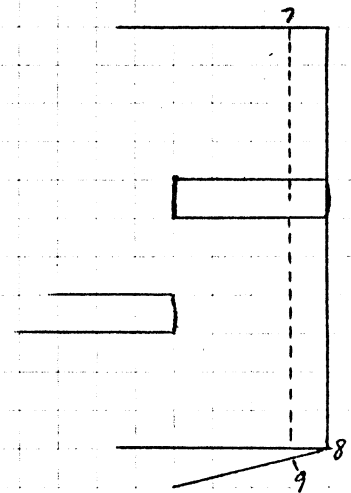
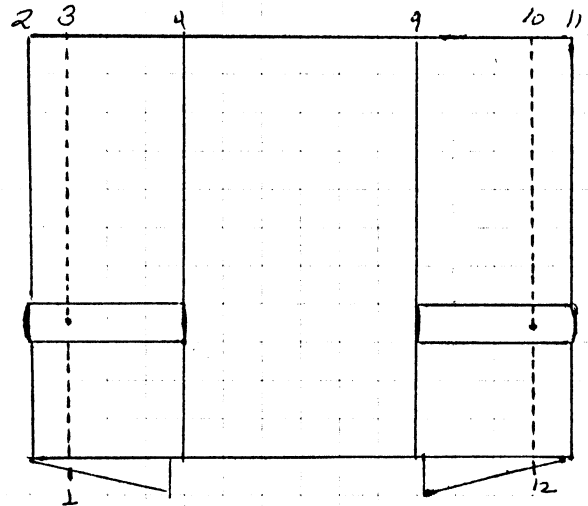
DO 1 COLUMN AT A TIME

IRON FLAT BEFORE CONTINUING.

FOLD KASA ON LINE 5 OR 8, PRESS,
PIN & STITCH AS BEFORE. IRON
THAT SIDE FLAT, THEN DO THE
OTHER SIDE. FOR LINE 5, STITCH
ON LINE 6. FOR LINE 8, STITCH
ON LINE 7.

WHEN YOU ARE FINISHED
IRON THE KASA FLAT
& IT SHOULD LOOK
LIKE THIS:

NOW YOU ARE READY
TO TOP-STITCH.

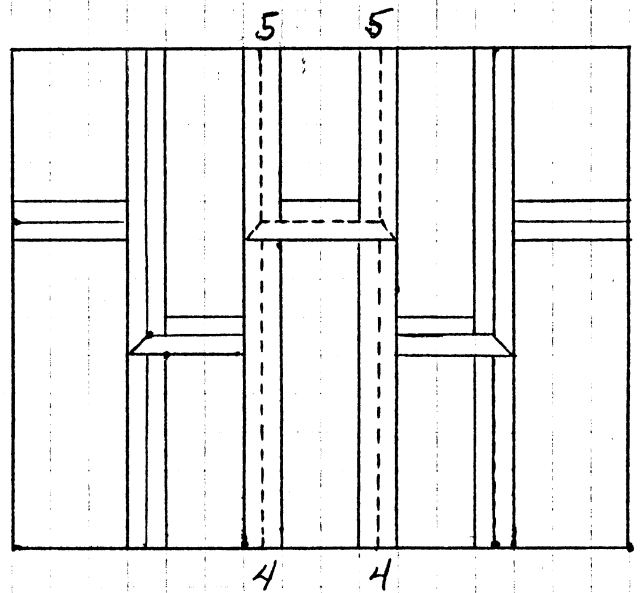
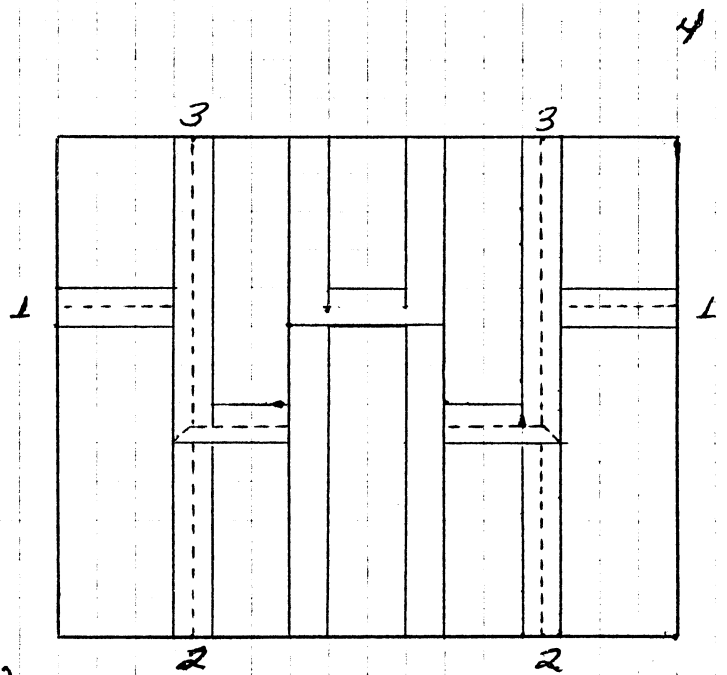


5. TOP-STITCHING-

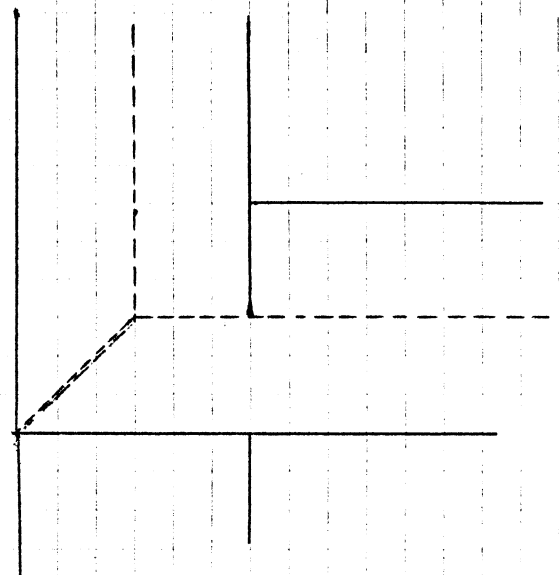
ALL THE FLAPS MUST BE TOP STITCHED DOWN THE CENTER OF EACH FLAP. THE ORDER IS IMPORTANT HERE OR YOU WILL NOT BE ABLE TO STITCH UNDERNEATH THE FLAPS.

NOTE THAT YOU MUST WORK FROM THE EDGE TOWARDS THE CENTER

AGAIN STITCH UP UNDER THE FLAPS. WHEN STITCHING ON TOP & TURNING A CORNER, STITCH DIAGONALLY INTO THE CORNER - SEE DETAIL BELOW.



DETAIL OF A CORNER FOR TOP-STITCHING.



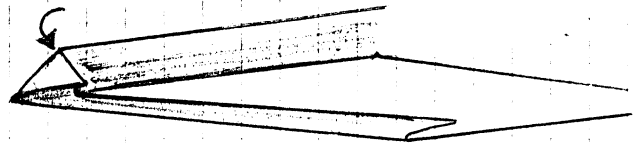
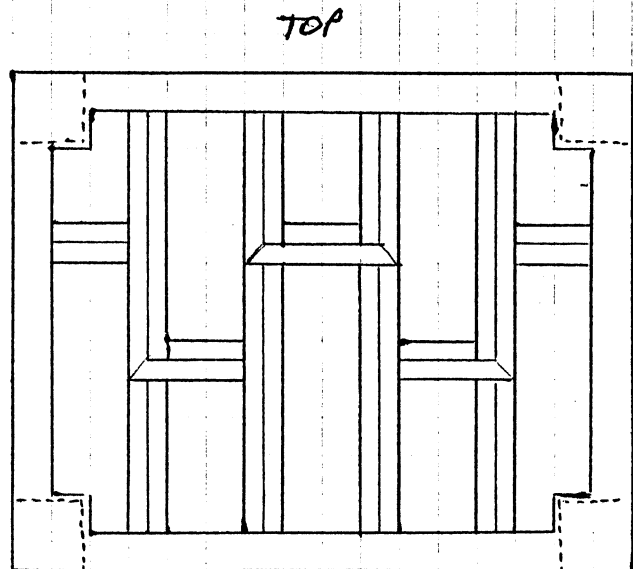
6. CORNERS - PRESS FRONT

TAKE PATTERN FORM #3 & *
LAY IT OVER FRONT, CENTERING
IT AS CAREFULLY AS POSSIBLE.

DRAW FRONT INSET ON
MATERIAL WITH A PIECE OF
CHALK. THIS WILL GIVE
THE GUIDE LINES FOR THE
CORNERS AND THE FRAME
AROUND THE PIECE.

FOLD SQUARES FOR CORNERS
ON 2 SIDES & PRESS.
MITRE THE CORNER AS
YOU TURN IT UNDER SO
THE MATERIAL WON'T
STICK OUT. PRESS.

MATCH WITH CHALK MARKS
& SEW TO FRONT AS SHOWN.

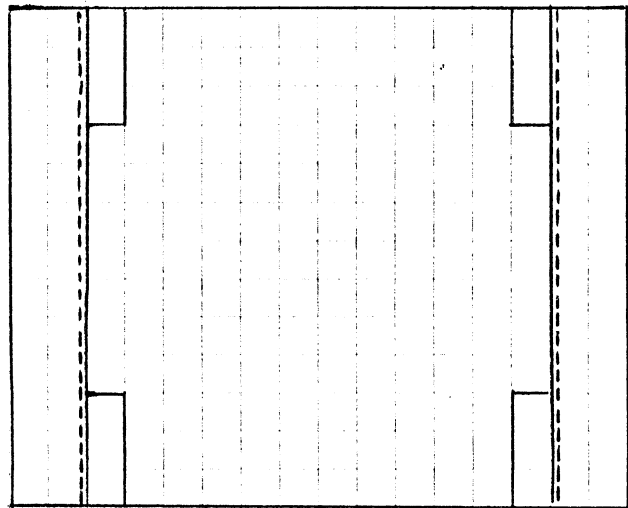


7. FRAME

FOLD AND PRESS THE 4
FRAME PIECES, TURNING
ONE EDGE UNDER 1/4"
APPROXIMATELY

A. STITCH THE 2 SIDE
FRAMES TO FRONT
MATCHING THE CHALK
LINES DRAWN IN #6.

(NOT TO SCALE)

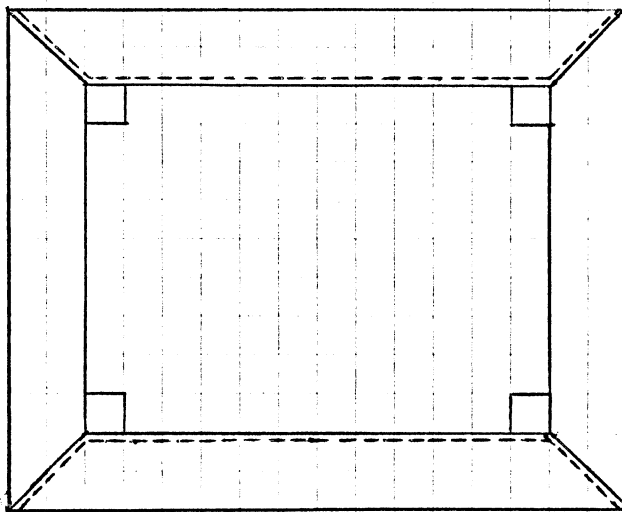


* YOU CAN ALSO USE THE
MARKING LINES YOU DREW
IF YOU DIDN'T USE A
PRE-MARKED TEMPLATE.
THE CORNER SQUARE THAT
SHOWS IS A LITTLE LESS
THAN THE WIDTH OF THE FRAME.

7. FRAME (CONT)

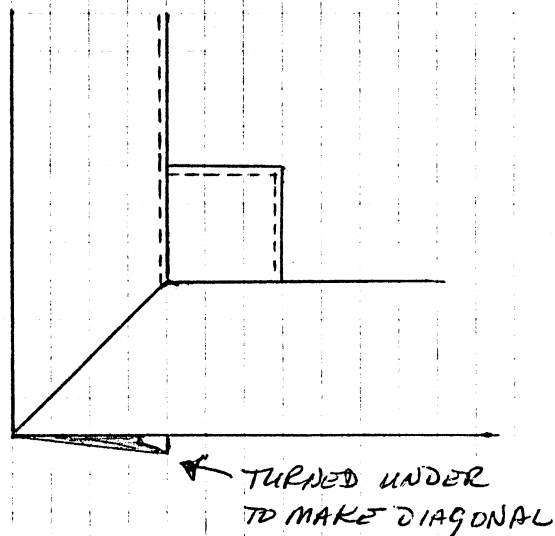
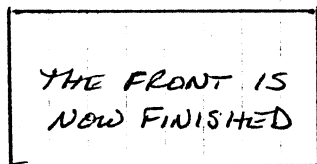
(NOT TO SCALE)

B. THE TOP AND BOTTOM FRAMES MUST BE MITRED AT THE CORNERS, PIN, STARTING AT THE MIDDLE & WORKING TOWARDS THE ENDS. BE CAREFUL TO MATCH THE MATERIALS AS CLOSELY AS POSSIBLE. (THE MATERIAL IN THE FRONT HAS A TENDENCY TO PUCKER AT THIS POINT).



PIN UP TO INSIDE EDGE OF VERTICAL FRAME, THEN TURN MATERIAL UNDER TO MAKE A DIAGONAL LINE TO THE OUTSIDE CORNER

CLOSE UP OF CORNER →

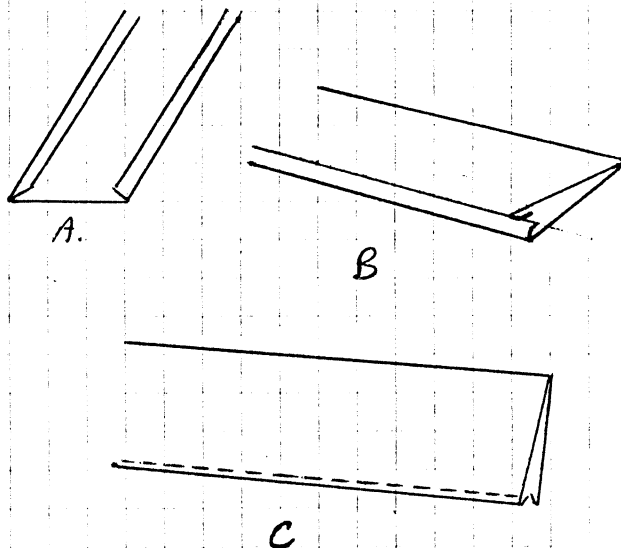


8. STRAPS.

A. TURN EDGES 1/4" ON STRAPS & IRON.

B. FOLD STRAP IN HALF ALONG ITS LENGTH WITH THE TURNED EDGES INSIDE - IRON.

C. STITCH OPEN EDGES TOGETHER



9. ATTACH BACK TO FRONT.

A. WITH FRONT RIGHT-SIDE UP, LAY THE BACK OVER IT.

B. PIN BACK TO FRONT DIAGONALLY ACROSS CORNERS.

C. WITH CHALK MARK THE CORNERS OF THE FRAME ON THE BACK.

D. MEASURE $1\frac{1}{4}$ - $1\frac{1}{2}$ " AWAY FROM THIS MARK TOWARD THE EDGE OF THE KASA, PERPENDICULAR TO EDGE (2 MARKS PER CORNER) LEAVE ENOUGH ROOM FOR A HEM. (THIS WILL BE YOUR STITCHING LINE.)

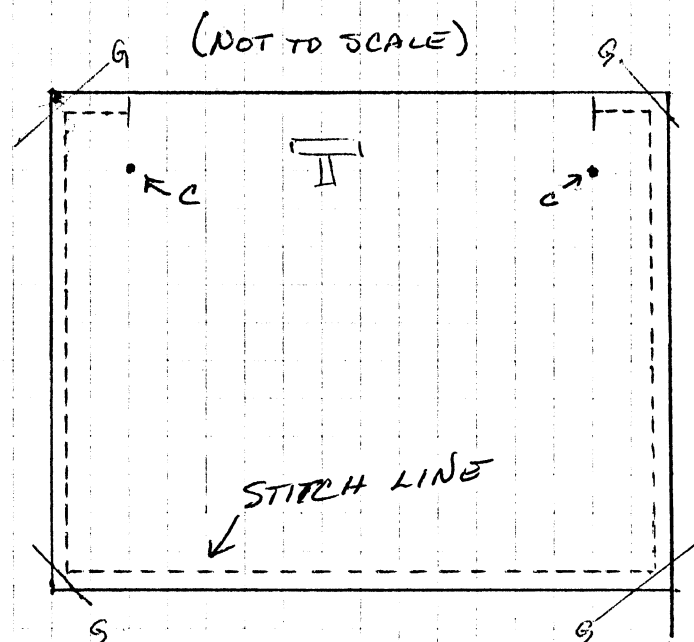
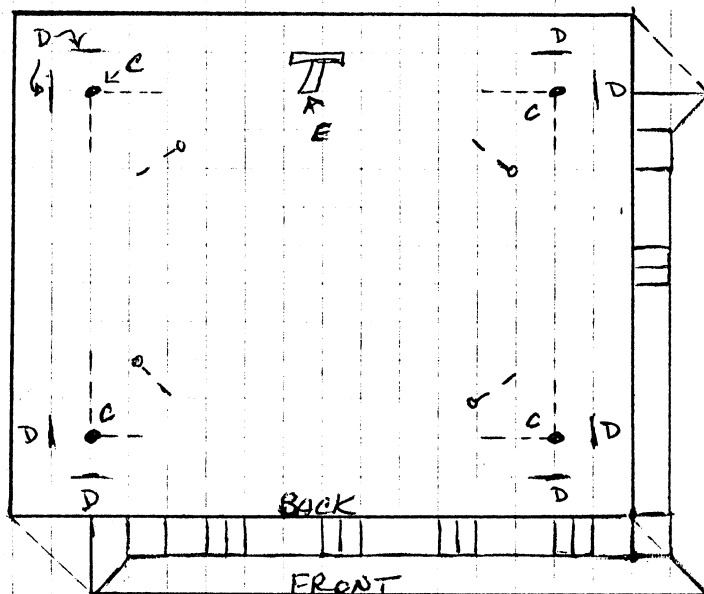
E. MARK WHERE THE TOP OF THE KASA IS. LOOK AT KASA ON PAGE 5 TO SEE THE PATTERN OF THE TOP AREA.

F. WITH A RULER AND CHALK CONNECT THE "D" MARKS LEAVING THE TOP OPEN BETWEEN THE "C" MARKS.

STITCH ON THIS LINE.

G. TRIM SEAM EDGES AND CORNERS. TURN RIGHT-SIDE OUT & PRESS THE SEAMS.

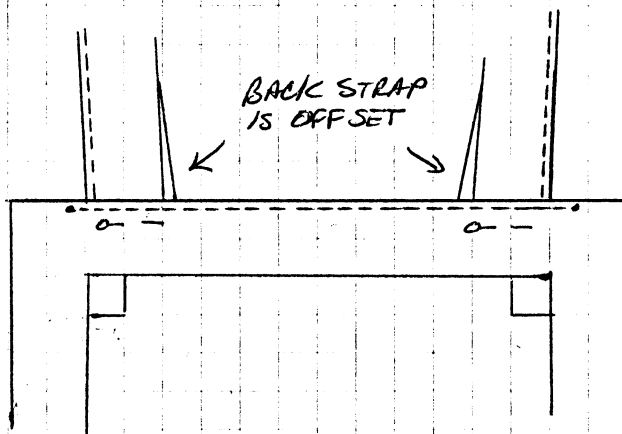
H. TURN THE EDGES OF THE TOP UNDER SO THEY ARE FLUSH WITH THE REST OF THE KASA & PRESS.



10. ATTACH STRAPS.

INSERT THE STRAPS IN THE OPEN AREA BETWEEN THE FRONT AND BACK + PIN.

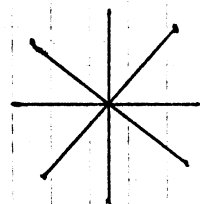
STITCH ACROSS THE TOP OF THE KASA TO CLOSE IT. FROM OUTSIDE OF STRAPS.



NOT TO SCALE

11. FINISH STRAP.

AT THE TOP OF THE STRAPS, PIN THEM TOGETHER + EMBROIDER AN EIGHT-POINTED STAR - ALL SPOKES ARE EQUAL.



KASA IS FINISHED